

# **2016/17 Interim Review of Polling Districts and Polling Places**

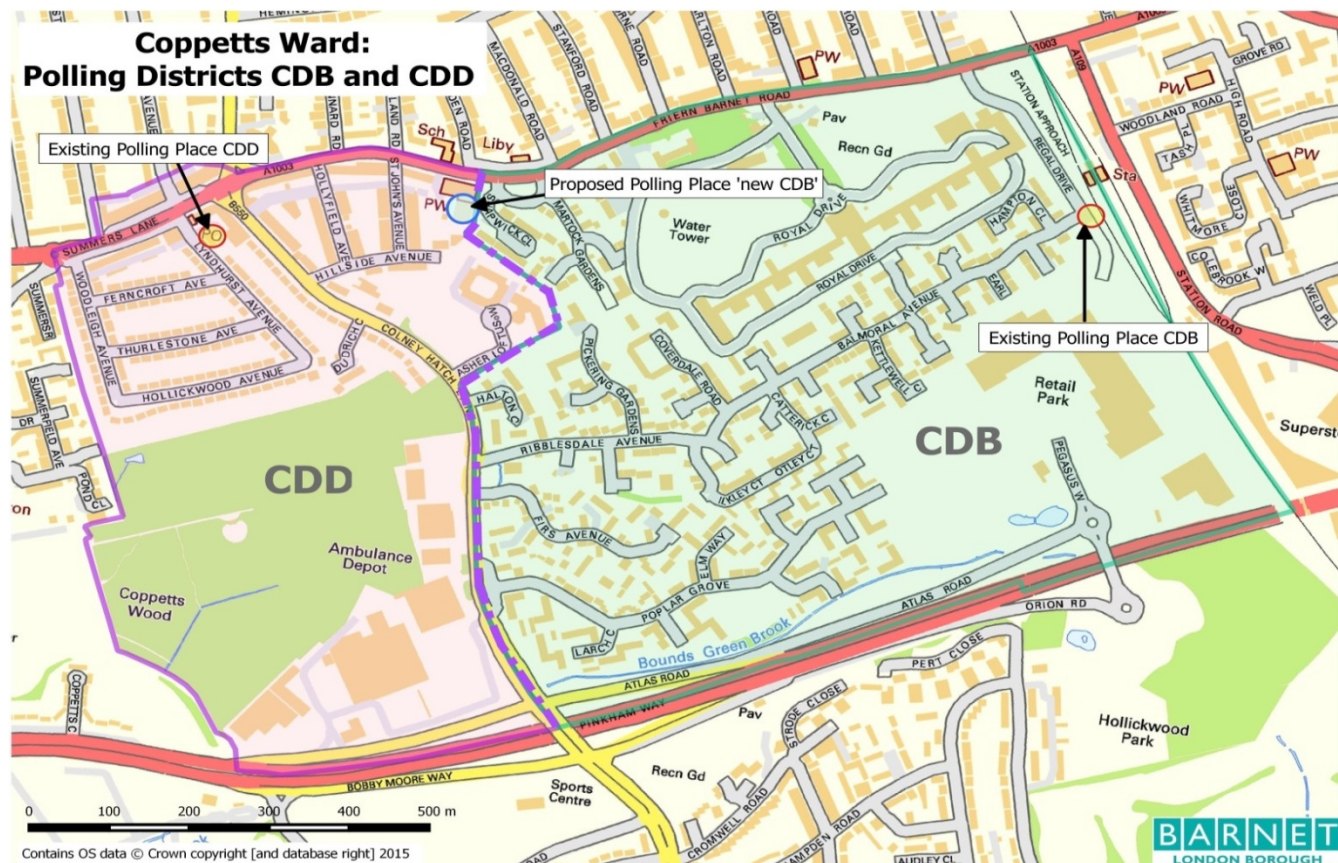
**Proposals of the (Acting) Returning Officer  
for the London Borough of Barnet**

**January 2017**

## **Chipping Barnet Parliamentary Constituency**

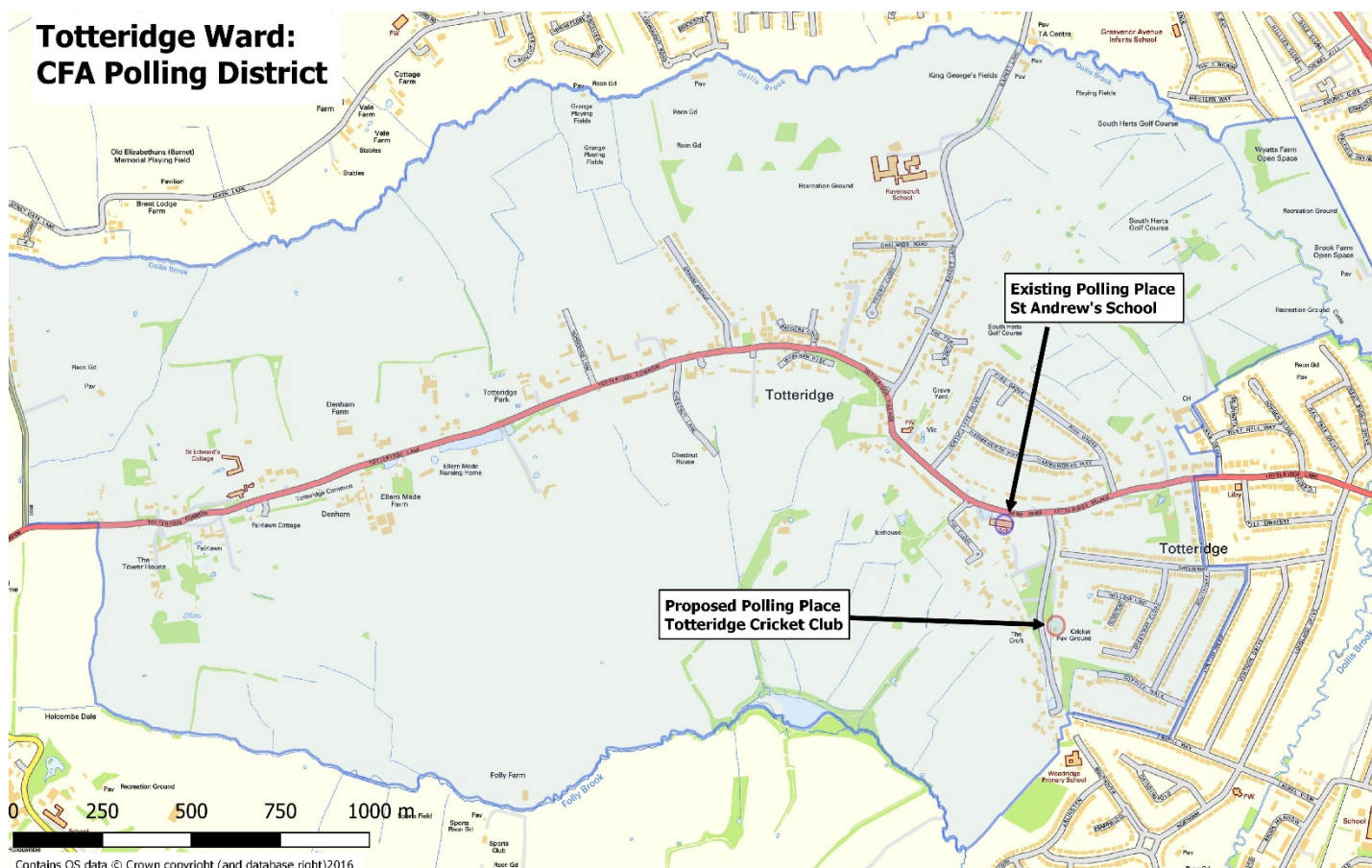
### **Polling Place Proposals Overview:**

	Ward	Polling District	Current Polling Place	Proposal
1	High Barnet	CAA	Hadley Memorial Hall	No Change
2	High Barnet	CAB	St Mark's Church Hall	No Change
3	High Barnet	CAC	Arkley Men's Club	No Change
4	High Barnet	CAD	Q E Boys School	No Change
5	High Barnet	CAE	Chipping Barnet Library	No Change
6	East Barnet	CBA	New Bevan Baptist Church	No Change
7	East Barnet	CBB	Trent (CE) Primary School	No Change
8	East Barnet	CBC	Scout Hall, Vernon Crescent	No Change
9	East Barnet	CBD	Brookside Methodist Church	No Change
10	East Barnet	CBE	New Barnet Community Centre	No Change
11	Brunswick Park	CCA	Monkfrith Primary school	No Change
12	Brunswick Park	CCB	Osidge Primary School	No Change
13	Brunswick Park	CCC	Portable Offices Car Park - Brunswick Park Rd	No Change
14	Brunswick Park	CCD	Brunswick Park Primary School	No Change
15	Coppetts	CDA	Scout Hall, Goldsmith road	No Change
16	<u>Coppetts</u>	<u>CDB</u>	<u>Portable Offices – Corner of Balmoral Ave and Regal Drive</u>	<u>Move to St John's Parish Centre (combine CDB with CDD)</u>
17	Coppetts	CDC	St Peter Le Poer Church Hall	No Change
18	<u>Coppetts</u>	<u>CDD</u>	<u>Hindu Cultural Centre</u>	<u>Move to St John's Parish Centre (combine CDD with CDB)</u>
19	Coppetts	CDE	Freehold Community Centre	No Change
20	Oakleigh	CEA	Barnet Lawn Tennis Club	No Change
21	Oakleigh	CEB	Lyonsdown Main Hall	No Change
22	Oakleigh	CEC	St Mary Magdalen Parish Centre	No Change
23	Oakleigh	CED	Methodist Church Hall Manor Drive	No Change
24	<u>Totteridge</u>	<u>CFA</u>	<u>St Andrew's JMI school</u>	<u>Move to Totteridge Millhillians Cricket Club, Totteridge Green</u>
25	Totteridge	CFB	Totteridge Tennis Club	No Change
26	Totteridge	CFC	St John's Church Hall	No Change
27	Totteridge	CFD	Finchley Catholic High School	No Change
28	Totteridge	CFE	Woodside Park Social Club	No Change
29	Underhill	CGA	Hope Community Centre, Mays Lane	No Change
30	Underhill	CGB	Underhill Baptist Church Hall, Elton Avenue	No Change
31	Underhill	CGC	St Stephens Church Hall	No Change
32	Underhill	CGD	The Pavilion, Brickfield Lane	No Change
33	Underhill	CGE	Grasvenor Avenue school	No Change



Existing Polling Place(s):	Proposed Polling Place:	Polling District Proposed Boundary Changes:
<b>CDB:</b> Portable Offices at Corner of Regal Drive and Balmoral Avenue. <b>CDD:</b> Hindu Multi-Cultural Centre, Lyndhurst Avenue	St John's Church Hall, Friern Barnet Lane	Combine CDB and CDD by removing the north-south border between them that runs between them (shown by dashed purple line on map), to create larger single polling district (new CDB).
<b>Review Commentary:</b> Number of Electors (1/7/16): CDB=2732, CDD=1144 The current polling place for CDB is the 'Corner of Regal Drive and Balmoral Avenue', where it is necessary to position two Portable Offices to act as polling stations. The Portable Offices are located close to the New Southgate over-ground train station and although this may benefit those electors that live within the polling district and use this station to commute, there is no evidence from hourly turnout figures at recent elections that this is the case (e.g. no increase in voting is evident during 'rush-hours' etc.). However, whilst in-situ the portable offices do present a severe obstruction to both the emergency access for the Friern Bridge Retail Park and most particularly for vehicular access of residents to Balmoral Avenue and its adjoining roads. Presiding Officers at these stations for elections in 2015 and 2016 recorded Health and Safety issues in their log books regarding elector access and also reported instances where voters temporarily parked their cars in such a way as to fully block the road. Portable Offices offer very poor access for electors with mobility issues and some disabilities, and are generally only used where no venue in a permanent building (ideally with DDA compliant access) can be identified within the polling district. Combining the polling districts of CDB and CDD and locating the polling place for this larger polling district at St John's Church Hall, will offer superior polling facilities (including parking spaces immediately outside the venue) to electors currently disadvantaged by the use of these portable offices, without any significant detrimental effect on any other electors within the polling district. In addition there would be an overall cost-saving (in venue hire and preparation costs) per election of approx. £3800 achieved by adopting this proposal.		
<b>Returning Officer's Proposal:</b> Combine polling districts CDB and CDD (by removing the current boundary between them) and place the polling place at St John's Parish Centre, Friern Barnet Road, N11 3EQ		





Existing Polling Place(s):	Proposed Polling Place:	Polling District Proposed Boundary Changes:
St Andrew's JMI Primary School, Totteridge Lane	Totteridge and Millhillians Cricket Club, Totteridge Green	None
<p><b>Review Commentary:</b> <i>Number of Electors (1/7/16): CFA=1703</i></p> <p>Representations have been received from the Chair of Governors at St Andrews Primary School over the past few years, requesting that an alternative venue be found for polling in the CFA polling district. As it is necessary for the school to close on polling days, they have proposed a number of possible alternative venues within the polling district. Of these, the facilities at the Totteridge and Millhillian Cricket Club located within a few hundred metres of the school are considered to be the most suitable. The facilities and accessibility at the Cricket Club match those offered by the school and the availability of on-site parking at the venue is a significant improvement versus the school venue. The cricket club is well positioned within the polling district to conveniently serve the vast majority of its electors and being situated so close to the school should ensure that those electors used to using the school are able to easily find the new polling place.</p>		
<p><b>Returning Officer's Proposal:</b></p> <p>Locate the Polling Place for CFA at Totteridge and Millhillians Cricket Club for future elections.</p>		

## **Finchley and Golders Green Parliamentary Constituency**

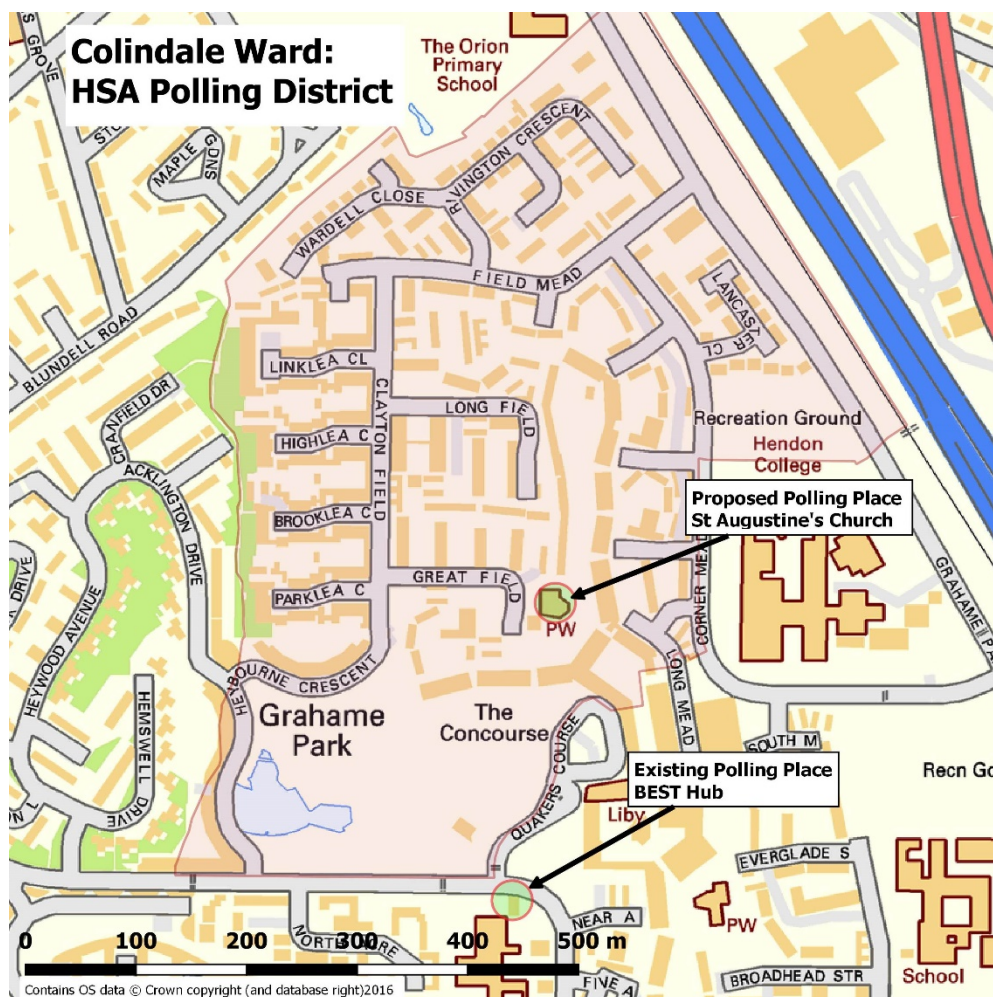
### **Polling Place Proposals Overview**

	Ward	Polling District	Polling Place	Proposal
1	Woodhouse	FHA	North Finchley Library	No Change
2	Woodhouse	FHB	Finchley Scout Hall	No Change
3	Woodhouse	FHC	Summerside School	No Change
4	Woodhouse	FHD	Our Lady of Lourdes Primary School	No Change
5	East Finchley	FIA	The Green Man Community Centre	No Change
6	East Finchley	FIB	East Finchley Library	No Change
7	East Finchley	FIC	Finchley Youth Theatre	No Change
8	East Finchley	FID	Bishop Douglas RC school	No Change
9	Garden Suburb	FJA	Brookland Infants school	No Change
10	Garden Suburb	FJB	Portable Office The Green - Widecombe Way	No Change
11	Garden Suburb	FJC	Portable Office The Synagogue - Norrice Lea	No Change
12	Garden Suburb	FJD	St Judes Church Hall	No Change
13	Garden Suburb	FJE	St Edward the Confessor Church Hall	No Change
14	Garden Suburb	FJF	Fellowship House	No Change
15	Childs Hill	FKA	Harris Room - Trinity Church	No Change
16	Childs Hill	FKB	All Saints CE School	No Change
17	Childs Hill	FKC	St Agnes Centre	No Change
18	Childs Hill	FKD	Trading Hut Needham Terrace	No Change
19	Golders Green	FLA	St Mary & Archangel Mikail Coptic Orthodox Church Hall	No Change
20	Golders Green	FLB	Menorah Primary School	No Change
21	Golders Green	FLC	Claremont Primary School	No Change
22	Finchley – Church End	FMA	St Philip the Apostle Parish Centre	No Change
23	Finchley – Church End	FMB	The Dining Room Avenue House	No Change
24	Finchley – Church End	FMC	Finchley Baptist Church hall	No Change
25	Finchley – Church End	FMD	Chalgrove JMI School	No Change
26	Finchley – Church End	FME	Portable Office at Hendon Cemetery	No Change
27	West Finchley	FNA	Carey Room Trinity Church Centre	No Change
28	West Finchley	FNB	St Paul's Church Centre	No Change
29	West Finchley	FND	Essex Hall	No Change

## **Hendon Parliamentary Constituency**

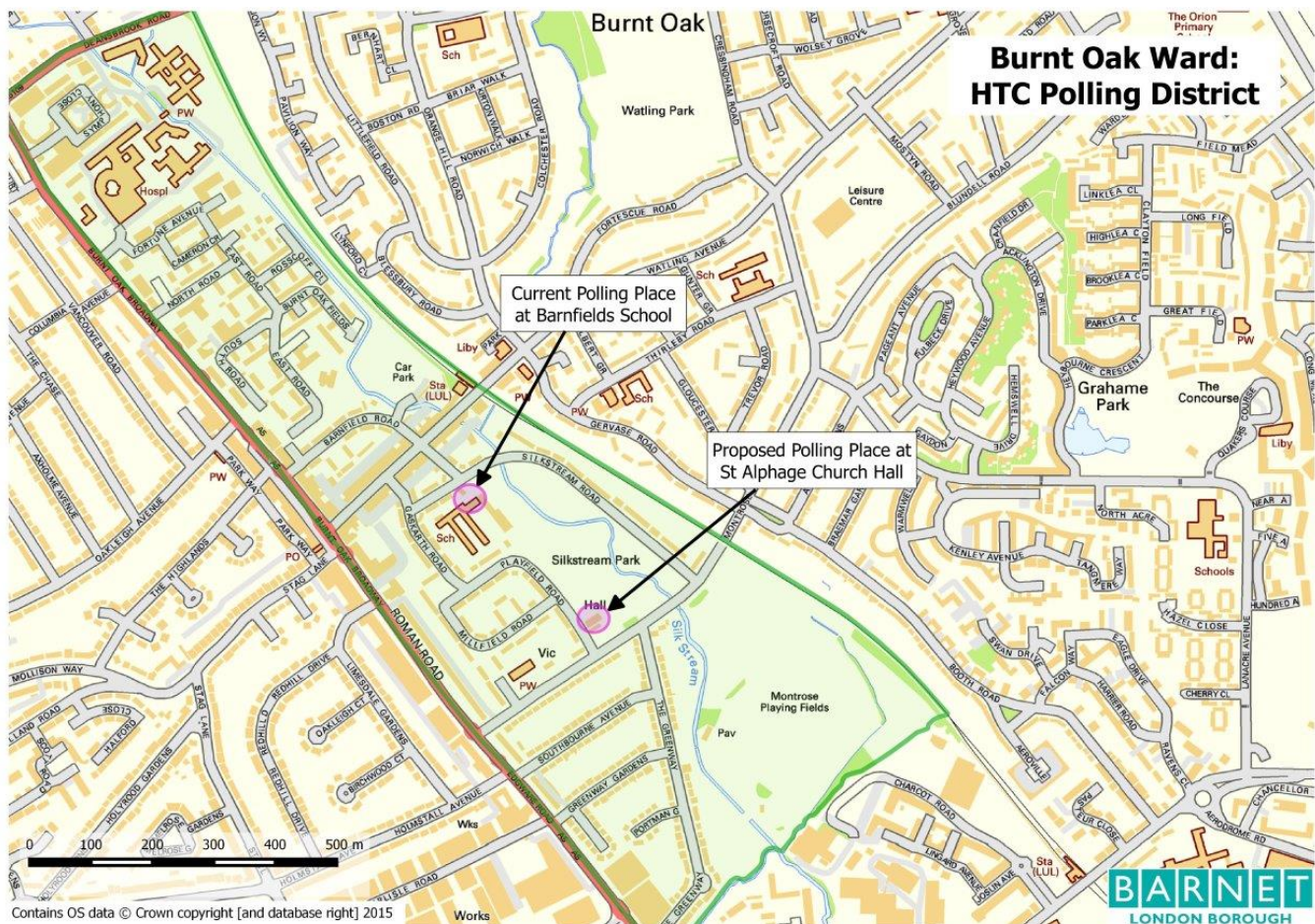
### **Polling Places Proposals Overview:**

	Ward	Polling District	Current Polling Place	Proposal
1	Hale	HOA	Fairway Primary School	No Change
2	Hale	HOB	Courtland JMI School	No Change
3	Hale	HOC	Deansbrook School	No Change
4	Hale	HOD	Portable – Harvester Car Park	No Change
5	Hale	HOE	The Royal British Legion	No Change
6	Hale	HOF	Annunciation Catholic School	No Change
7	Mill Hill	HPA	Etz Chaim Jewish School	No Change
8	Mill Hill	HPB	St Paul's Church Hall	No Change
9	Mill Hill	HPC	Portable Offices Bittacy Road	No Change
10	Mill Hill	HPD	Dollis Infants School	No Change
11	Mill Hill	HPE	Mill Hill Library	No Change
12	Hendon	HQA	Sunnyfields School	No Change
13	Hendon	HQB	St Mary and St John CE School	No Change
14	Hendon	HQC	Bell Lane School	No Change
15	Hendon	HQD	Hendon School	No Change
16	West Hendon	HRA	Barnet Multi-Cultural Centre	No Change
17	West Hendon	HRB	Hasmonean Primary School	No Change
18	West Hendon	HRC	Parkfield Primary School	No Change
19	West Hendon	HRD	West Hendon Community Centre	No Change
20	West Hendon	HRE	The Hyde school	No Change
21	<u>Colindale</u>	<u>HSA</u>	<u>BEST Hub, Lanacre Ave</u>	<u>Move to:</u> <u>St Augustine's Church Hall</u>
22	Colindale	HSB	Grahame Park Community Centre	No Change
23	Colindale	HSD	Estate Management Suite	No Change
24	Colindale	HSC	The Hyde United Reform Church Hall	No Change
25	Burnt Oak	HTA	Trinity Watling Church Hall	No Change
26	Burnt Oak	HTB	Our Lady of the Annunciation Church Hall	No Change
27	<u>Burnt Oak</u>	<u>HTC</u>	<u>Barnfield School</u>	<u>Move to:</u> <u>St Alphage Church Hall</u>
28	Burnt Oak	HTD	Watling Community Association	No Change
29	Edgware	HUA	Broadfields Infant School	No Change
30	Edgware	HUB	Edgware Parish Hall	No Change
31	Edgware	HUC	Stonegrove Community Centre, (Hayling Way / Green Lane)	No Change



Existing Polling Place(s):	Proposed Polling Place:	Polling District Proposed Boundary Changes:
BEST Hub, Lanacre Avenue	St Augustine's Church, Great Field	None
<p><b>Review Commentary:</b> Number of Electors (1/7/16): HSA=2269</p> <p>The polling place for HSA polling district was moved to the BEST Hub on Lanacre Avenue from St Augustine's Church, Great Field at the last interim polling places review in January 2016. Since that date however, considerable remedial building works have been carried out at the premises of St Augustine's which have fully resolved all of the Health and Safety concerns which necessitated the need to find an alternative polling place. The roof and ceilings have been fully repaired and are now both safe and free from any leaks and the interior of the premises has also been refurbished in other aspects which mean that both the accessibility and available space for polling is much improved.</p> <p>The BEST hub was used as the polling place for HSA for the London Mayor and GLA elections in May '16 and for the EU referendum in June '16 and although turnout in this polling district was comparable on these two polling days to other elections and to nearby areas, the polling place is not considered ideal as it is situated just outside of the polling district boundary and is more difficult to approach than St Augustine's for electors on foot due to the need for electors to cross the frequently busy Lanacre Avenue.</p> <p>The polling districts and polling places throughout the Colindale Ward will need to be kept under regular review in the coming years to ensure that they remain appropriate throughout, due to the considerable regeneration in the area and subsequent ongoing changes to the density and numbers of electors that will inevitably occur throughout this period.</p>		
<p><b>Returning Officer's Proposal:</b></p> <p>Return the Polling Place for HSA (currently at BEST Hub, Lanacre Avenue) to St Augustine's Church for future elections.</p>		





Existing Polling Place(s):	Proposed Polling Place:	Polling District Proposed Boundary Changes:
Barnfield School	St Alphage Church Hall	None

**Review Commentary:** Number of Electors (1/7/16): HTC=2956

The current polling place for HTC polling district is at Barnfield School, which remains open on polling days and ensures electors (and the general public) cannot access the main school building by providing a room that is not accessed via the main school entrance. Unfortunately this entrance is located underneath a very narrow, covered archway that is an actively used road leading to the school's (and co-located Children's Centre) staff parking area. There is insufficient room for a pedestrian and a car to pass each other safely and multiple concerns were raised during the delivery of the elections in 2015 and 2016 about the safety of elector's whilst accessing the polling stations only entrance. There is no available parking for electors on-site (or indeed particularly nearby) so all electors must access this polling venue on foot.

In addition, there are further concerns regarding the health and safety and accessibility with the current arrangements as once inside the entrance to the polling stations, there a number of steep steps down into the hall. Although a purpose built ramp has been constructed here, it does not comply with DDA requirements (indeed the RO and DRO actually witnessed an elderly elector fall from this ramp whilst visiting the station in May 2015).

If the school is to be retained as the polling place for future elections, the Returning Officer considers that he will be required to exercise his statutory right to designate another area of the school as the location for the polling stations. This will be necessary to resolve the significant concerns that he has regarding the poor accessibility for elderly electors and those with restricted mobility (including some forms of disability) and the highly unsatisfactory health and safety risks posed by the current polling station entrance. By moving the location of the polling stations within the school (e.g. to the main hall), electors would be required to enter them by way of the school's main entrance and thus be provided with far safer access and facilities. As a consequence however, the Head teacher has been very clear that such arrangements would force the school to be closed



to pupils on polling days.

The proposed alternative polling place at St Alphage Church Hall is assessed as having superior facilities when compared with the current venue. There is much safer access for electors (especially the elderly, wheelchair users and those with restricted mobility and some forms of disability) from the street and internally the venue has all appropriate facilities available far more conveniently than at the hall currently used within the school.

Although the St Alphage Church Hall is a few hundred metres further away from Burnt Oak Underground station than the school site, it is well served by local buses, is easily accessible on foot from all directions and benefits from having some non-CPZ street parking available nearby

**Returning Officer's Proposal:**

Locate the Polling Place for HTC polling district at St Alphage Church Hall for future elections.

**Representations Received by Electoral Services in Response to the  
Notice of Review of Polling Districts and Polling Places 2016/17**

**Representation 1 of 6**

**Representation received from Cllr. John Hart – re: Mill Hill Ward Polling Places  
3 February 2017**

Dear Mr Bailey,

I notice there is no change in Mill Hill ward's polling stations. As the population in Millbrook (the former MoD barrack site) increases towards an eventual 4,000 to 6,000 inhabitants there is a need to consider either transferring the temporary voting station in Bittacy Rd to Millbrook or creating a new polling station within Millbrook.

With my regards  
John Hart  
Cllr, Mill Hill

---

**Representation 2 of 6**

**Representation received from Cllr. Nagus Narenthira – re: HSA Polling Place  
3 February 2017**

We as Councillors of Colindale ward welcome the move of this polling station back to St. Augustine's Church hall. That is the appropriate place for the polling station. We have requested this move several times and now we are glad that it has happened. People who live in HSA polling station will find it easier to vote now. This is a thumbs up for democracy.

**Representation received from Cllr. Ammar Naqvi – re: HTC Polling Place**  
**8 February 2017**

Dear John,

Thank you very much for the Interim Review. May I ask a question about the shift of polling station in HTC: I recall when this was last discussed we raised concerns about the safety of Silkstream Park at night. It was suggested at the time that the shift from Barnfield School to St Alphage would be accompanied by better lighting in and around the park. Please could you confirm whether this is still the case? Thank you.

Kind Regards,

**Cllr Ammar Naqvi**  
Burnt Oak Ward  
London Borough of Barnet

**Representation received from Kate Salinger – re: Polling Stations**  
**13 February 2017**

Dear Sir/Madam,

I am requesting permission to speak at the General Functions Meeting on March 20th in relation to the proposed moving of polling stations.

Kate Salinger  
[Personal Telephone number supplied and redacted]

Please let me know that you have received this email and my request is accepted.

Kind regards,

Kate Salinger



**Representation received from Diana Gunn (Headteacher of Barnfield Primary School)**  
**re: HTC Polling Place**  
**22 February 2017**

I am writing as the Headteacher of Barnfield Primary School in Burnt Oak.

We have previously been a polling station, using our music room or SEN room which both have external access. I was told on a recent visit that if we were to be a polling station again then a larger space would be needed. This would then involve closing the school due to safeguarding. I am appealing to you to not use the school as this would clearly disrupt the children. Elections often take place during May - this is the key time for the national tests of our Years 2 and 6 children. To close the school in the week prior to this will have an impact on the learning of those children. I know it is seen as only one day but we work very much from the fact that every day counts, that every lesson counts and that as much learning as possible is given to the children.

Additionally we work very hard with parents to ensure that our children have a high attendance. This is a hard battle as many families want to take holidays and the costs are so high during official school holidays. We have worked incredibly hard to get our attendance figures above the national average. If I close the school I am starting to give the message that it is ok when we want to close the school but not when they want/need to take holidays.

I fully support the electoral process and do understand that you need to find places where the general public can easily access. However, by using the school it will have an impact on 450 children for the day as well as their families who also have to find additional child care provision for their children as well as all the learning that has been lost. I know there has been a discussion about using St Alphages Church in Burnt Oak rather than the school. This is just across the park from us and would not have the huge impact on the learning of the children that using the school would have.

I do hope that you are able to take our request into consideration.

Kind Regards

Dianna Gunn  
Headteacher

**Representation received from Frances Lasok (Agent for Chipping Barnet Conservatives and Theresa Villiers MP) – re: CFA and CDB Polling Places**  
**27 February 2017**

Dear John,

I hope that you are well. As discussed last week, please find below my representations on the proposed new polling places for Chipping Barnet.

Above all, polling places should be situated so that it is easy for people to vote. This is important not only in terms of the Electoral Commission guidance but to encourage residents to participate in the democratic process.

I am particularly concerned about the proposals to move the polling station in Totteridge Village and the polling station by New Southgate. Both proposals seem to be placing obstacles in the way of electors for no good reason.

**CFA**

St Andrew's school hall in the CFA polling district is conveniently situated: it is on the way from Totteridge village for commuters going to Totteridge and Whetstone station, taking their children to school, running errands on Whetstone High Road or driving to work on the Great North Road. The cricket club is out of the way to walk to and difficult to access by car. The one potential improvement at the cricket club, the better car park, is outweighed by the single-track road leading to it.

The school is better placed than many to act as a polling station given that voting can take place in the hall and there is a separate entrance meaning that there is no need for the school to close. Given that the hall was donated for the benefit of the people of Totteridge, refusing to allow its use as a polling station seems rather contrary to the spirit in which it was left to the school.

There does not seem to be a reason to move the polling station away from the school other than that the current Chair of Governors objects. I am not certain that this is a valid reason to make it more difficult for the residents of Totteridge to vote.

**CDB**

I understand that the Portacabins situated at the junction of Regal Avenue and Balmoral Drive are not ideal polling stations. That said, I do not believe that moving the polling station to St John's Church Hall will improve the situation for the voters in the area.

Evidence from the ground for the past several elections is clear that there is a large increase in peak time, and that people vote coming off the trains at New Southgate,

coming from the Piccadilly Line at Arnos Grove, or off the buses from Station Road. The Portacabins are conveniently placed for commuters whilst the church hall is not. As well as being in the wrong direction, the church hall is also further away for much of the polling district.

As discussed, I am not convinced about the applicability of the quoted turnout figures in judging the placing of the polling station. The data used is from the European Referendum, which saw very high turnout and those who are ordinarily non-voters voting. I am not sure using an election where people would have gone to any lengths in order to vote is a good example to judge whether or not a polling station is conveniently placed. A better case would be local authority elections although the problem, as with all election data, is that there are no control samples and it is very difficult to ever compare like with like.

I understand that the ERO has not actually received any complaints regarding difficulty in accessing the Portacabins. I am not sure that it is worth running the risk in making life more difficult for any electors with mobility issues, especially those that do not drive, by moving the polling station to a less convenient location if nobody is experiencing problems with the Portacabins at the moment.

Best wishes,

Frances Lasok, Agent  
Chipping Barnet Conservatives & Theresa Villiers MP